

LASCOD

Exploit

The
only
one



The
only
one
to
offer
you



absolute
hygiene

EXPLOIT is easy to clean, the first guarantee against cross-contamination.



EXPLOIT is the only stainless steel tray in full compliance with international protocols (1)(2)(3)(4) when...



1)
Precleaning and Cleaning:
removing bioburden and any adherent impression material is the fundamental first step in achieving an effective **DISINFECTION** and **STERILIZATION**.



2)
Disinfecting: resistant to disinfecting solutions with High Quality AISI 304 HIGH STAINLESS STEEL.

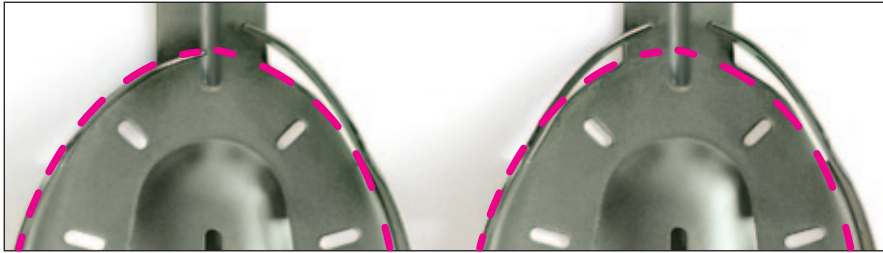


3)
Sterilizing: autoclavable at 134°C (273,2°F) with no alteration.

REFERENCES:

- (1) CDC. *Guidelines for infection control in dental health-care settings – 2003*. MMWR 2003; 52 (No.RR-17):1–66.
- (2) USAF *Guidelines for Infection Control in Dentistry, September 2004*,
- (3) 1998 *Guidelines for crown and bridge UK-British Society for Restorative Dentistry, J Prosthodont Restor Dent 1999; 7(1): 3-9*.
- (4) *Proper Maintenance of Instruments, 8th revised edition 2005, www.a-k-i.org*

total adaptability



EXPLOIT is the only one with adjustable front walls. Always the right size with just 3 sizes!

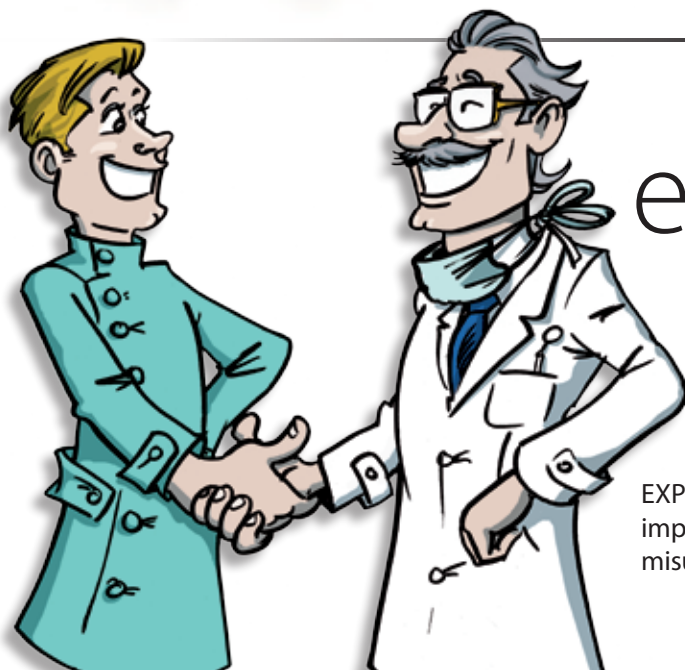
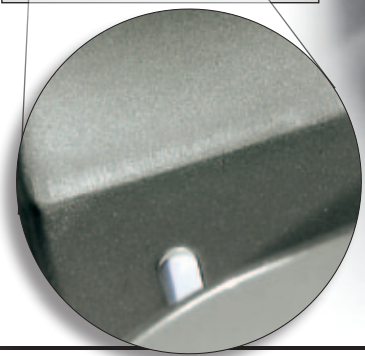
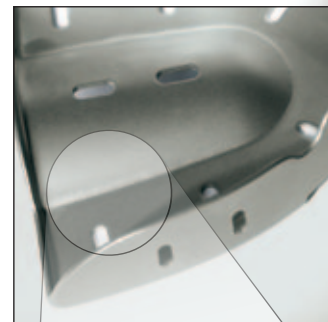
EXPLOIT is the only one with an anatomical design for utmost accuracy (3) and ergonomic properties to satisfy patient's requirements.



best retention

EXPLOIT is the only one with a unique design for retention points (3) where they are really needed!

EXPLOIT is the only one with a satin finish for even more retention!



an efficient and economical choice

EXPLOIT is the only one able to achieve accurate impressions reducing chair time, material waste and misunderstanding with the laboratory!

advanced technology

EXPLOIT impression trays new manufacturing technology (LASCOD Patent) is the result of LASCOD Research Laboratories' study-project aimed at achieving an innovative and economic tool for impression taking.

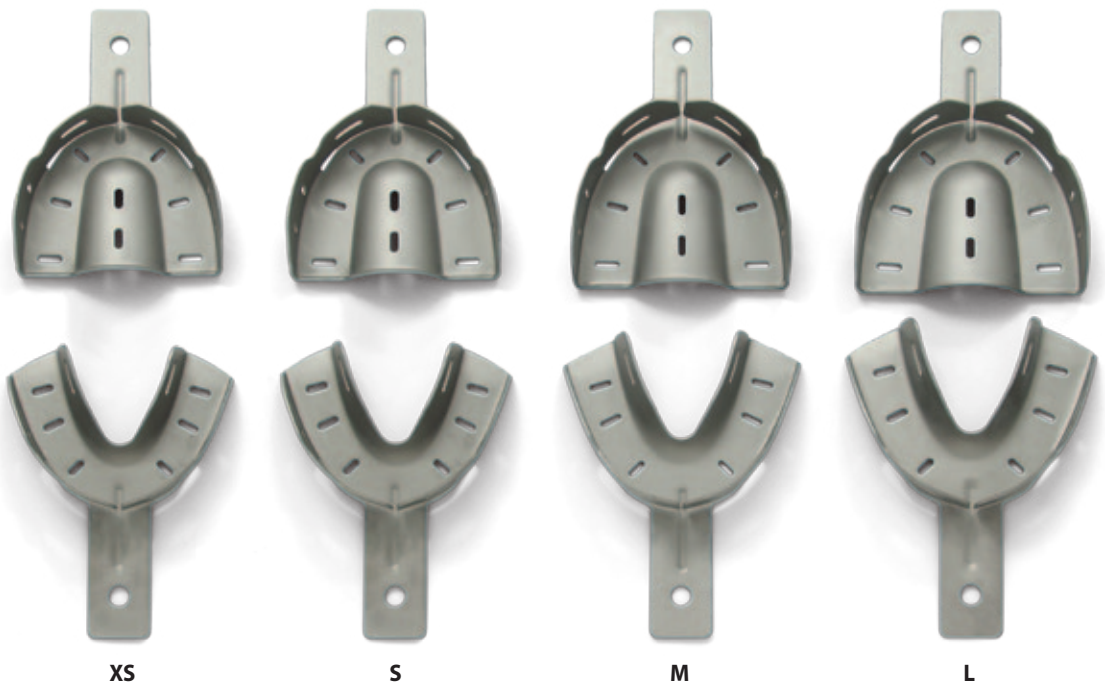
EXPLOIT addresses all concerns raised by plastic and aluminum tray users such as:

- 1) not sufficient handle rigidity
- 2) points of soldering and undercuts hiding place of biological residues
- 3) difficult cleaning processes and ineffective disinfection and sterilization procedures
- 4) storing of too many sizes
- 5) issues of accuracy
- 6) need for adhesive products because of not sufficient retention
- 7) patient discomfort

EXPLOIT impression trays were designed for non edentulous patients. Four sizes are available for the upper and lower dental arches (extra small - small - medium - large).

Perforated and non-perforated EXPLOIT trays are compatible with all impression materials and are available with a micro-sand blasted satin finish for even more retention.

SHAPES	Width	Length	Perforated	Non perforated
UPPER				
	mm.	mm.		
XS	62	50	EXF112	EXL312
S	66	53	EXF113	EXL313
M	69	57	EXF114	EXL314
L	72	60	EXF115	EXL315
LOWER				
	mm.	mm.		
XS	60	49	EXF212	EXL412
S	72	53	EXF213	EXL413
M	75	57	EXF214	EXL414
L	78	60	EXF215	EXL415



EXPG84 - FEB. 2012



EXPLOIT is also available in kits of 6 pieces, three upper and three lower impression trays, versions:

- EXK603** - (S - M - L) - perforated satin finish
- EXK604** - (S - M - L) - non perforated satin finish
- EXK605** - (XS - S - M) - perforated satin finish
- EXK606** - (XS - S - M) - non perforated satin finish



For further information activate the QR Code reader on your smartphone.

